

CONSTRUCTION



e. gerald@geraldmclean.com

w. <https://geraldmclean.com>

m. +44 (0) 7719761101



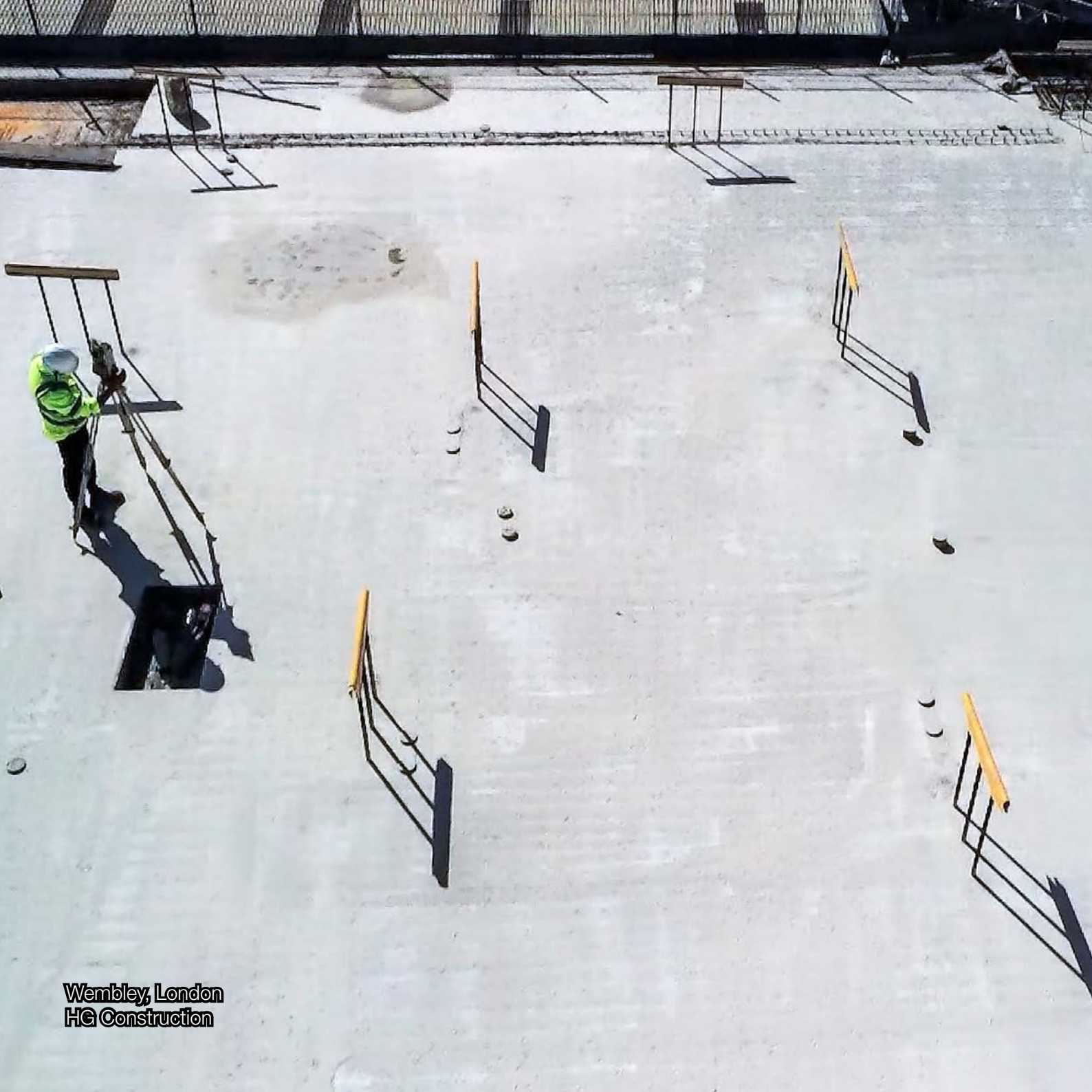
commission outstanding images by geraldmclean

With boundless ability and creativity, refined through study and practice, geraldmclean, utilising pro-standard cameras, steady-cams and drones, produce cinematic, exhibition-quality Architectural and Construction photography and video that convey the aesthetics of structural design.

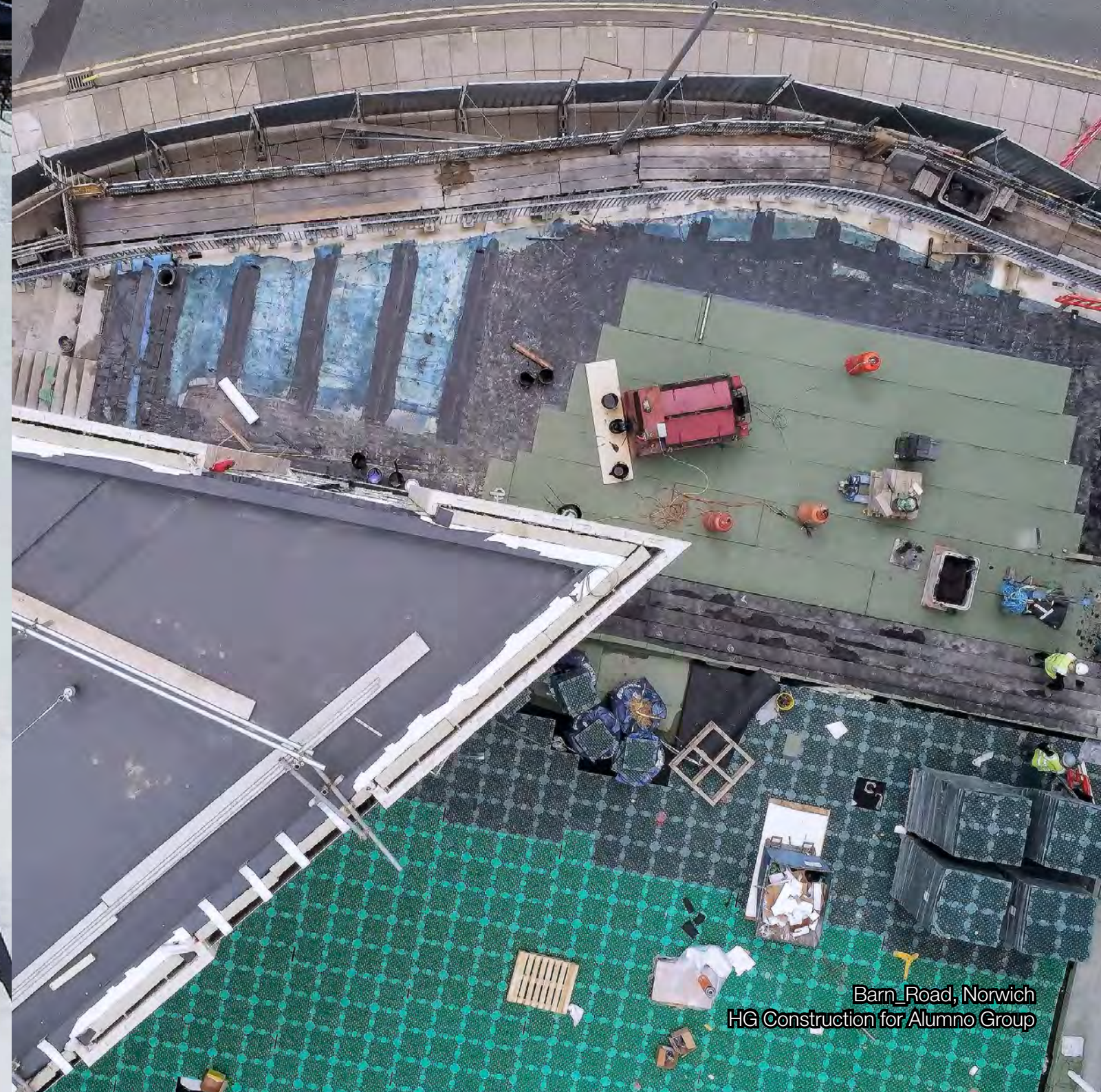
We also offer: 360 degree plus 3D photography and video, video editing, image retouching, typography, illustration, and digital art, in creating and posting social media content, plus developing and maintaining client's websites.

*To request a quote or book an assignment contact
gerald@geraldmclean.com*

Coating specialist, Greenwich Peninsular, London
Bridgegap Ltd for Wates Construction



Wembley, London
HG Construction



Barn Road, Norwich
HG Construction for Alumno Group



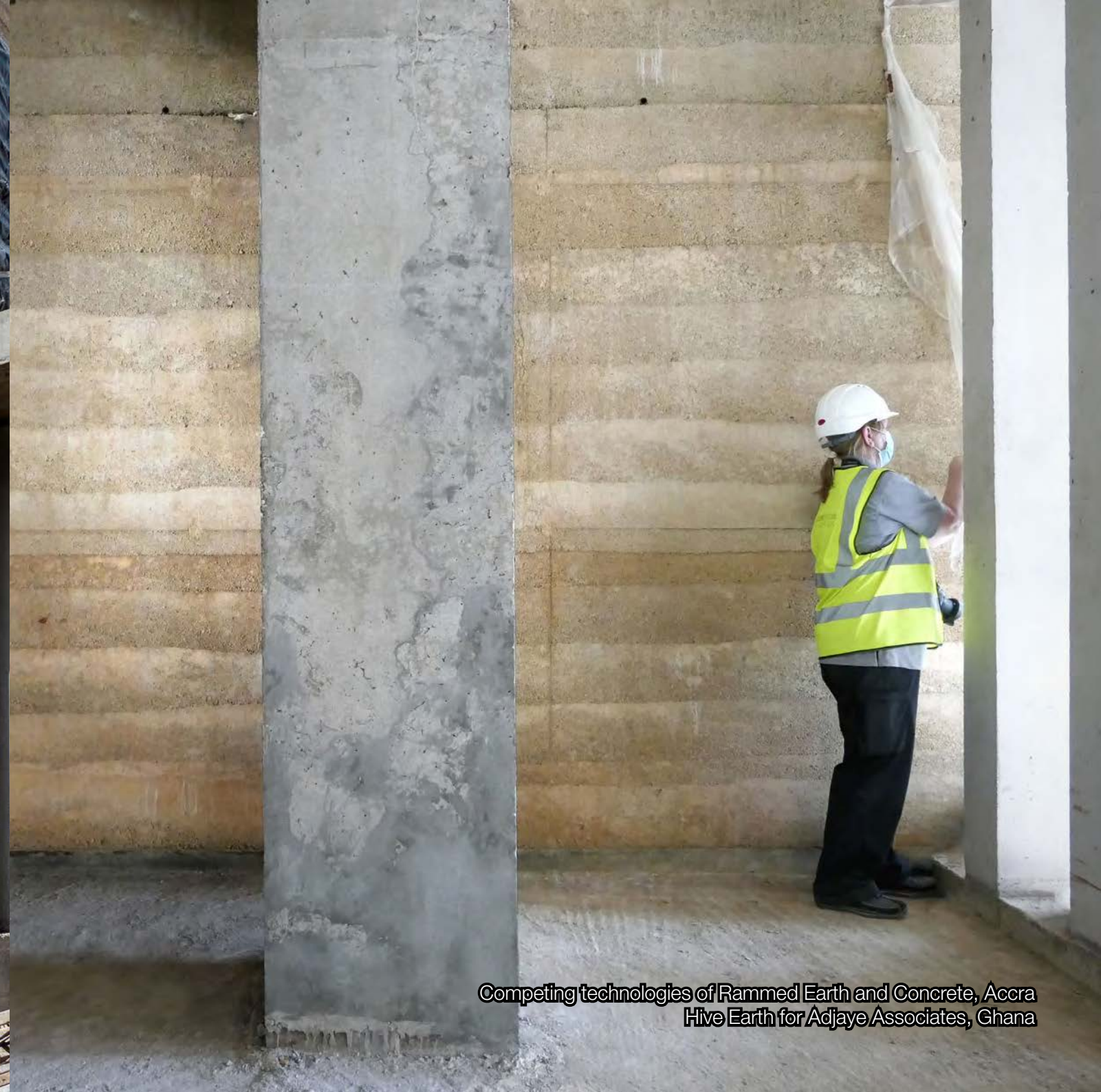
One West Point, Alpertown, London
C.J. O'Shea for City & Docklands



Rammed Earth 4-storey construction, Accra
Hive Earth for Adjaye Associates, Ghana



Competing technologies of Rammed Earth and Concrete, Accra
Hive Earth for Adjaye Associates, Ghana



Competing technologies of Rammed Earth and Concrete, Accra
Hive Earth for Adjaye Associates, Ghana



Greenwich Peninsula, London
Wates Construction for Knight Dragon



Greenwich Peninsula, London
Wates Construction for Knight Dragon



Greenwich Peninsula, London
Ardmore Construction for Knight Dragon



The Scalpel, The Willis Building, City of London
MACE for the Willis Group



Corbridge Crescent, London
HG Construction for Aitch Group



Minavile House, Alpertons, London
HG Construction for R55, Lidl, Genesis Housing



Muscat Expressway, Qurum
Ministry of Transport and Communications (MOTC) of Oman



Muscat Expressway, Qurum
Ministry of Transport and Communications (MOTC) of Oman



Large Crawler Excavator, Muscat
Volvo Construction Equipment



Royal Hospital Chelsea
Bridgegap Ltd for Wates Living Space



Church Street Estate refurbishment
Bridgegap Ltd for Wates Living Space



Rammed Earth specialist, Accra
Hive Earth, Ghana



H&S, Site Logistics Manager, Guildford
HG Construction for Scape



Greenwich Peninsula, London
MACE for Knight Dragon



Site Office, Greenwich Peninsula, London
MACE for Knight Dragon

A self-starter with an entrepreneurial mindset - geraldmclean has studied Photographic Art and achieved MAs in both Digital Imaging and Documentary Photography/Photojournalism. He is happy engaging with teams of creative professionals working on projects from concept-to-completion. In commissioning geraldmclean, clients find his imaging skillset, conceptual experience, and constructive enthusiasm bring positive attributes that ensure fiscal and prestigious benefits to a project, or assignment.

CONSTRUCTION PHOTOGRAPHY

As a construction photographer, geraldmclean, having completed CSCS training, understanding crane operations, the need to attend inductions, and accident reporting, is well versed in Health & Safety and operational procedures that must be adhered to on site. Thus, ensuring the safety of all in maintaining productivity.

geraldmclean focuses on capturing the process and art of construction, whilst remaining aware of the need clients have for abstract images, for use in reports and other media driven publications, both online and in print. *“With a plethora of imagery used in print and particularly on social media, viewers quickly ignore feeds. So, it is those posts that have striking images and video that tend to provide clients with a good return on their efforts”.*

geraldmclean's keen interest in imaging technology - finding new visual methods of presentation - has broadened his services and use of the latest techniques and equipment in producing the finest image records and B2B video footage. He approaches each assignment as an opportunity to extend his knowledge and experience in offering his clients images that are informative and versatile for multiple uses and a record of the current art of construction.

“Gerald Mclean is a highly experienced and well-published creative architectural photographer who works internationally. Gerald's choice of architecture as his specialized subject was determined by his apprenticeship to architectural photographer John Maltby and his desire to portray that which he perceives to be constructive in our lives – both literal and abstract. Architecture; and the elements from which it is composed provide Gerald with the ideal subject with which to transform those elements into salient pictorial form. In experimenting with the new shapes that present themselves, he has realized artistic confidence controlling the fundamentals of architectural form; line, mass, space, and proportion. International assignments have helped Gerald to photograph buildings from unusual standpoints; to stress those aspects, which communicate the driving aesthetic behind each building to the viewer, without losing the integrity of the architect's design”.



Further reading:

Art Project: Cycle of Observation (<https://cutt.ly/780DJM>)

RIBA feature: Ages of Substrate (<https://www.ribapix.com/gerald-mclean>)

DesignCurial feature: Photographing the Gherkin (<https://cutt.ly/M8B9aR>)

Works of Gerald Mclean can be obtained from ribapix.com (<https://www.ribapix.com/>)

<https://geraldmclean.com> - photographic practice / phone - +44(0)7719761101